

CENTRALIZED MONITORING SOFTWARE

WIFI-Camera instructions

(Computer terminal)

Chapter 1 introduction

Client software is used for realizing centralized monitoring, storage and control on video surveillance device of front-end network. The software supports 1/4/9/16/25/36/49/64 single-screen and full-screen display, OSD name display setting, two-way voice intercom, local video recording, picture capture, etc. Also, it is interface-friendly and easy to operate, thus facilitating users to realize remote network monitoring on multiple devices simultaneously.

Main functions:

- ✓ Real-time monitoring video image.
- ✓ Support two-way voice intercom.
- ✓ Support PTZ direction control, image rollovers and mirror image.
- ✓ Support local manual video and Snapshot.
- ✓ Support DDNS (Dynamic Domain Name Server) protocol.

Chapter 2 installation guide

1. Software installation

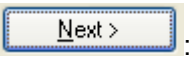
1.1 OS configuration requirements

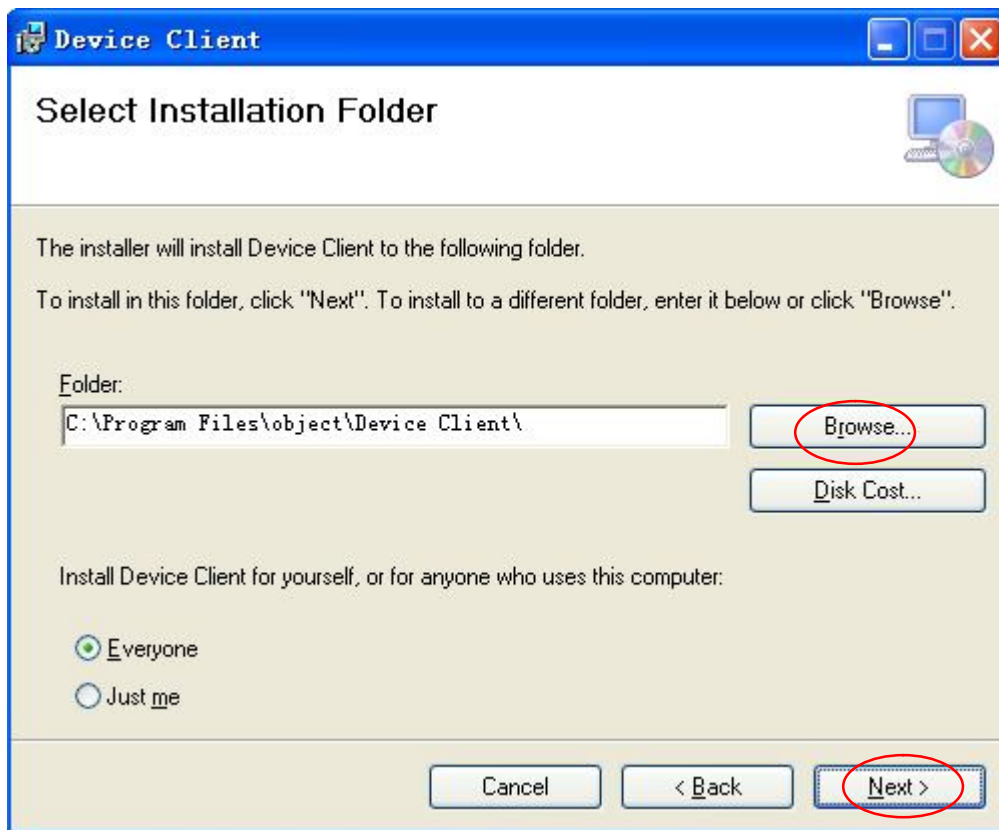
- ✚ Operating System: Windows 7/XP in English or simplified Chinese.
- ✚ CPU: above P4 2.0G (suggested) .
- ✚ Memory: above 256M.
- ✚ Display card: support display card above DirectX8.1 , 32 M video memory.
- ✚ Sound card: it is used to realize voice monitoring and two-way voice intercom.
- ✚ Hard Disk: no less than 40G if you want to record video

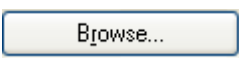
1.2 Software installation

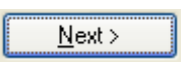
1.2.1 Find and open the installation program “DeviceClient.msi”

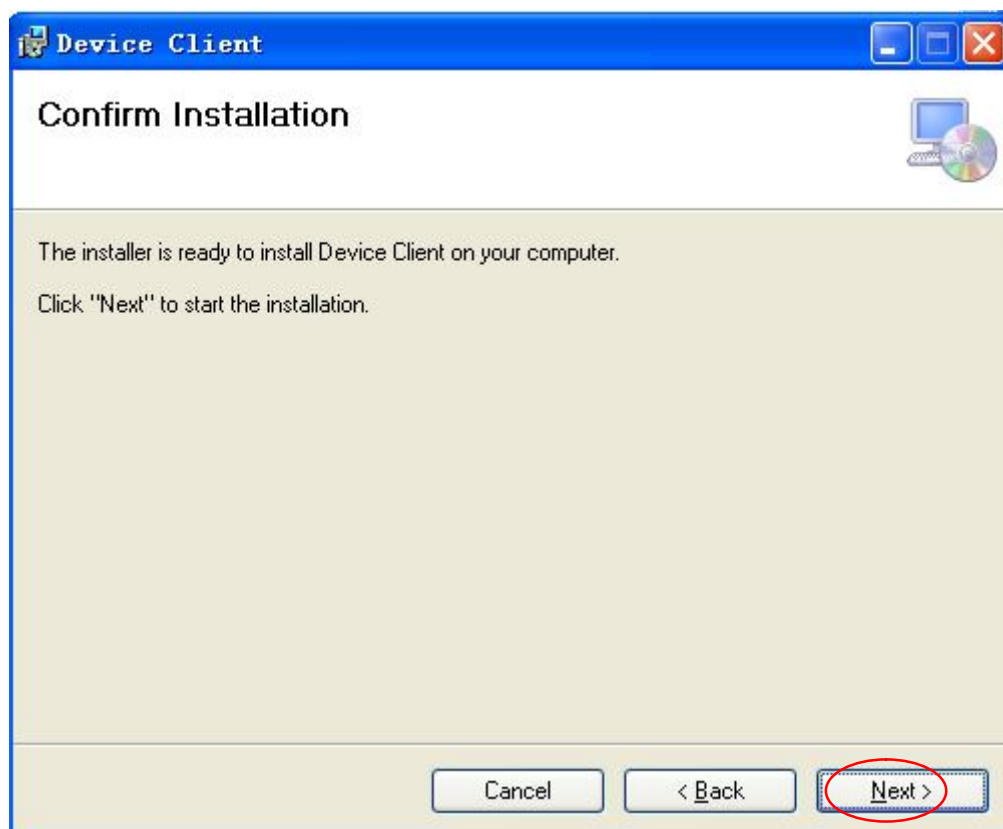


Click  :

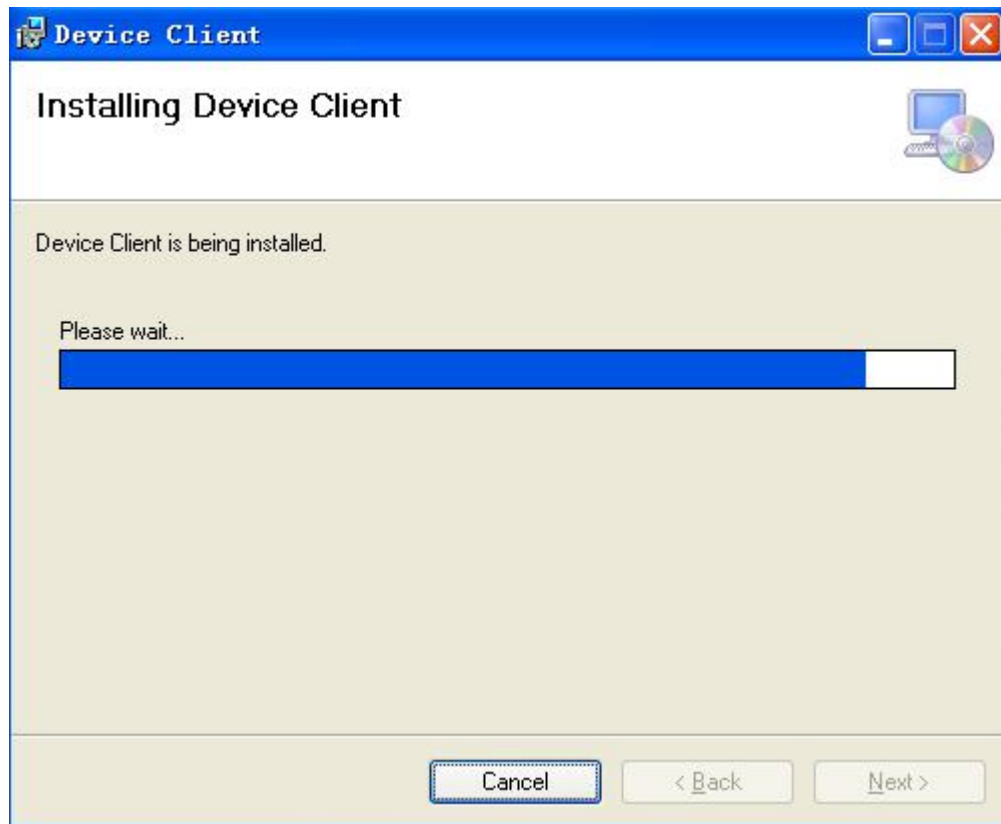


1.2.2 Click  to change the installation path as you wish, if you click

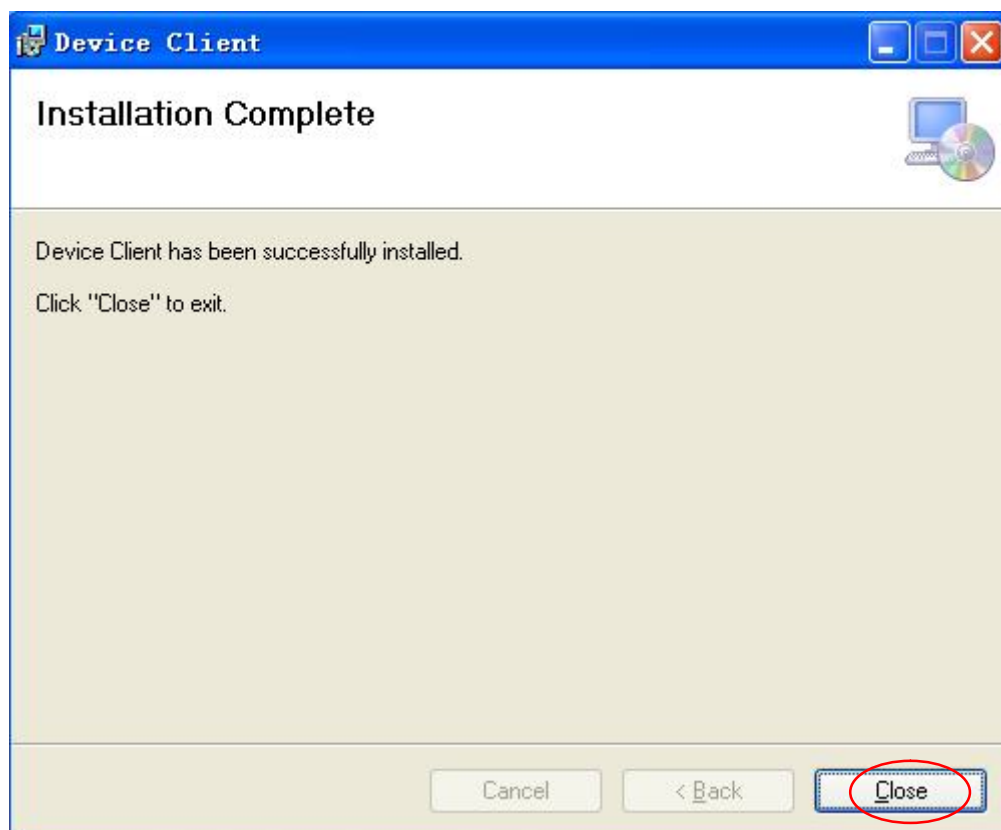
 directly, the following window will appear:



Click  to start installing:



1.2.3 Click  to finish software installation.



2. Software remove and repair

Before removing and repairing the client, please ensure the client software has been stopped running in the background.



Open the installation program DeviceClient.msi



You also can find “DeviceClient” on PC control panel as below:

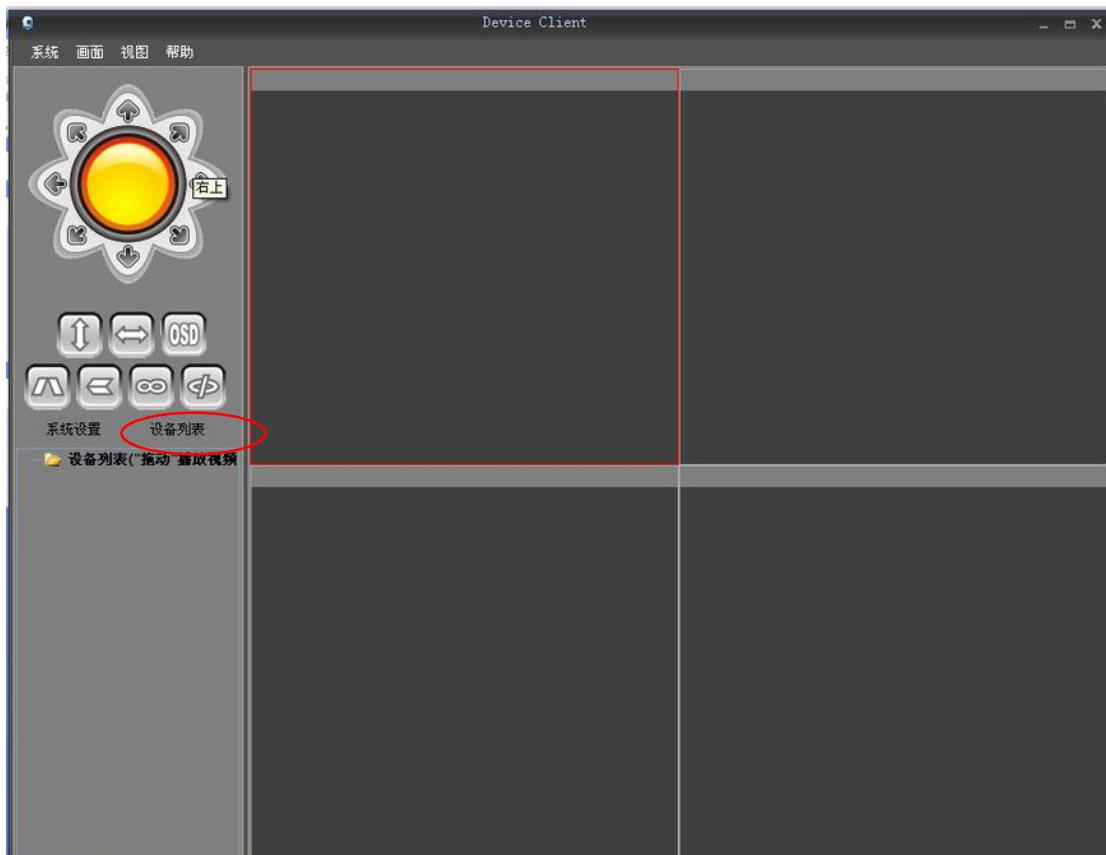


Chapter 3 Software help

1. Main interface of the client



Open client program directly to enter into main interface as shown below:



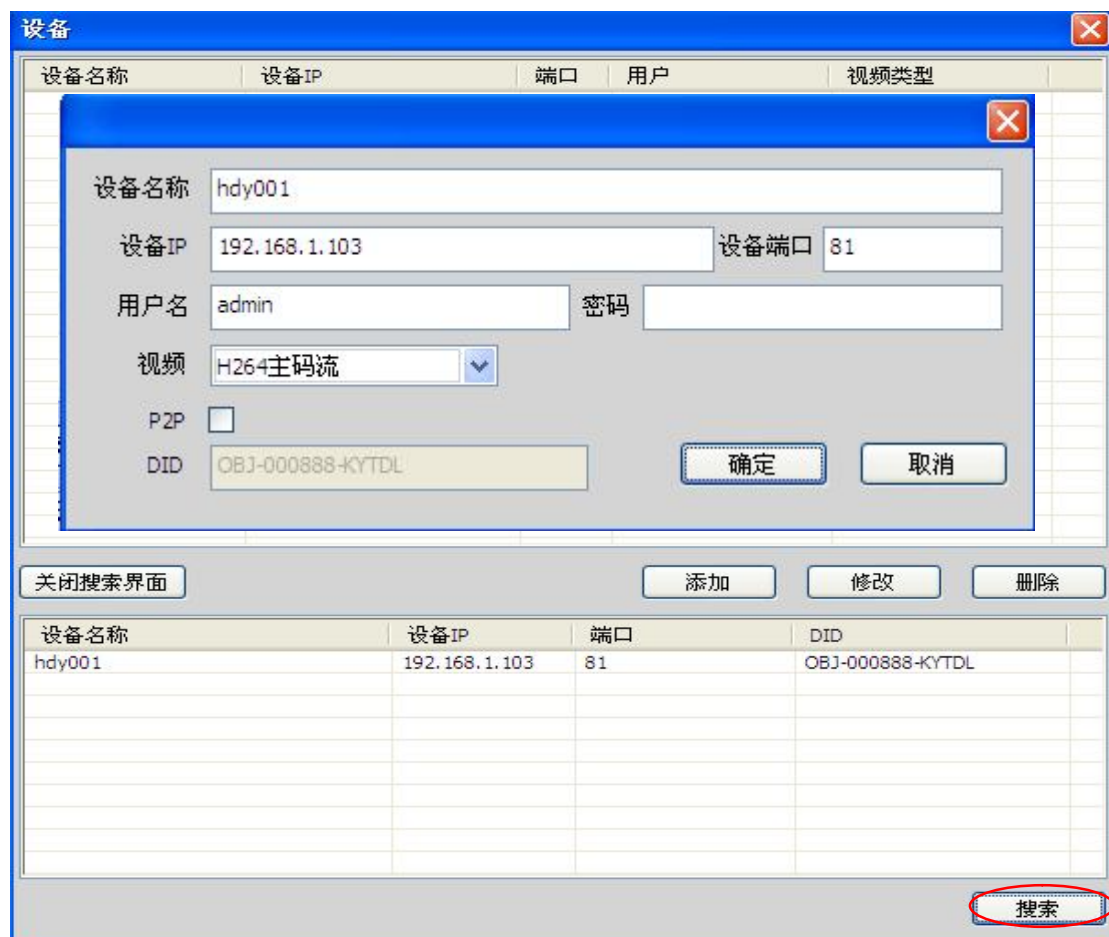
The first time for using the client, users need to add IP address/device name to the client if they want to open the monitoring screen, please follow below steps:

- ① Click **设备列表** (device list) to pop up the following dialog box:



Open **打开搜索界面** (searching interface) and then click **搜索** (search)

Double click the searched IP address as follows:



Just change the video format: H264主码流, then click 确定 (confirm), the device is added successful.

② Users can add IP address/device name manually if needed, Click 添加 (add) as below:

The screenshot shows a window titled '设备' (Device) with a table of existing devices and a modal dialog for adding a new device.

设备名称	设备IP	端口	用户	视频类型
WIFICAM	192.168.1.101	81	admin	3
HIDIPCAM	192.168.1.110	81	admin	0

The modal dialog contains the following fields:

- 设备名称 (Device Name):
- 设备IP (Device IP):
- 设备端口 (Device Port):
- 用户名 (Username):
- 密码 (Password):
- 视频 (Video): H264主码流
- P2P: ☐
- DID:
- Buttons: 确定 (Confirm), 取消 (Cancel)

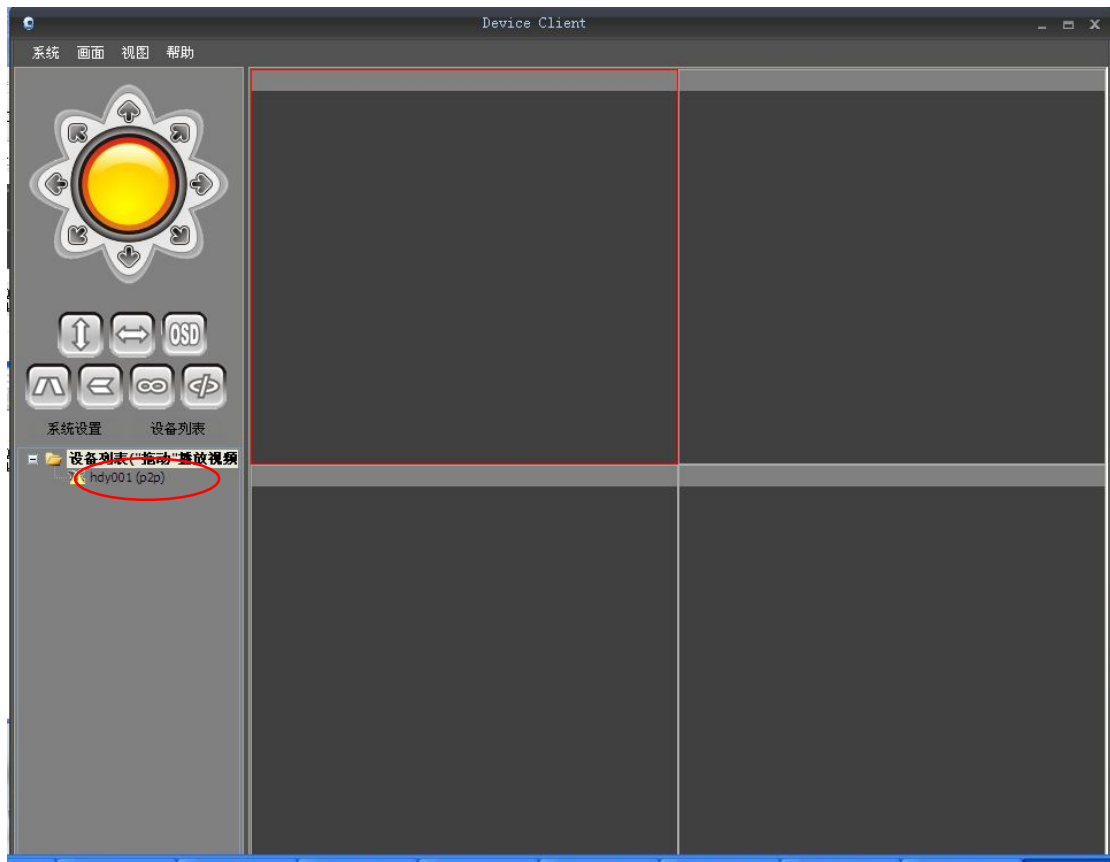
At the bottom of the main window, there are buttons: 打开搜索界面 (Open Search Interface), 添加 (Add), 修改 (Modify), and 删除 (Delete).

- Input a self-defined device name, Default username is admin, password none,
- Select a correct video & audio format, then click 确定 (confirm) to finish.

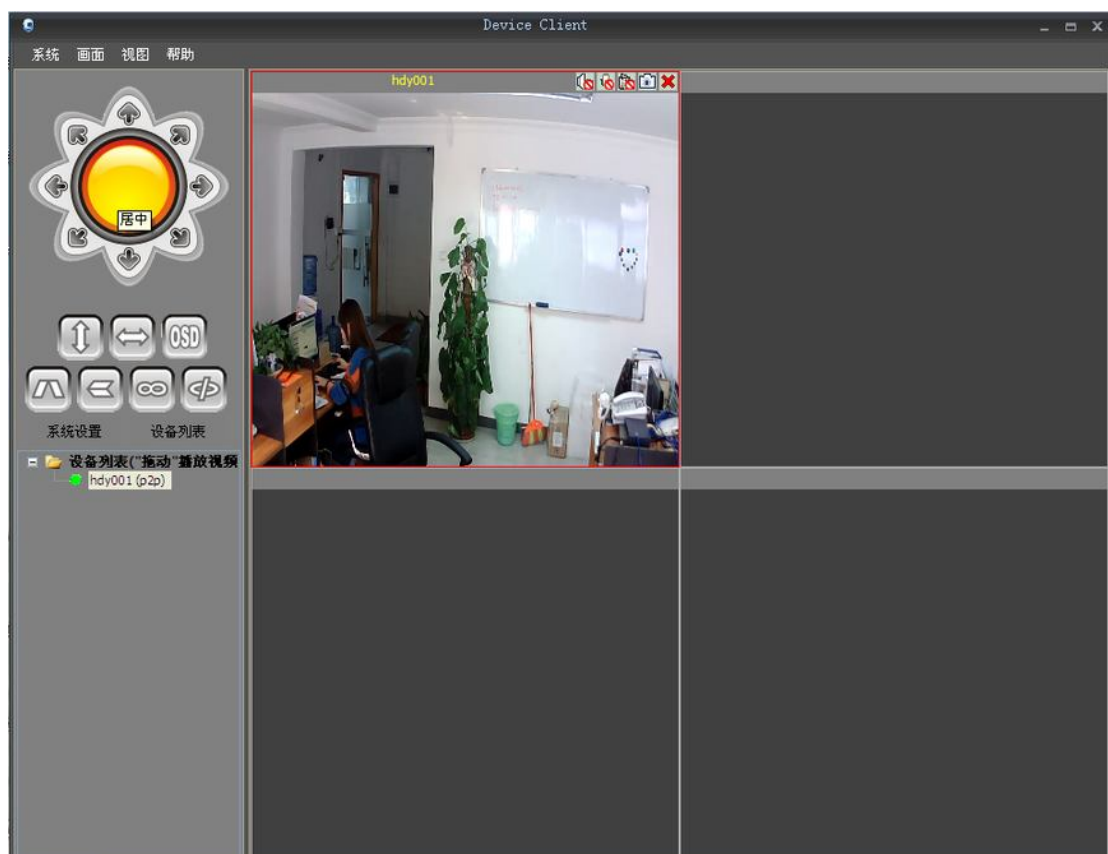
The screenshot shows the '设备' (Device) modal dialog with the following fields filled out:

- 设备名称 (Device Name): 123
- 设备IP (Device IP):
- 设备端口 (Device Port): 81
- 用户名 (Username): admin
- 密码 (Password):
- 视频 (Video): H264主码流
- P2P: ☒
- DID: obj000888kytdl
- Buttons: 确定 (Confirm), 取消 (Cancel)

③ Select one in device list and drag it to the displayed window as shown below:



And now, the client has been correctly connected to the device and the monitoring screen can be viewed.



2. Main interface function

2.1 Function keys



: PTZ direction control



: Start “up/down” and “left/right” scanning.



: Video mirror image and “up/down” vertical flip.



: Display device name and time.



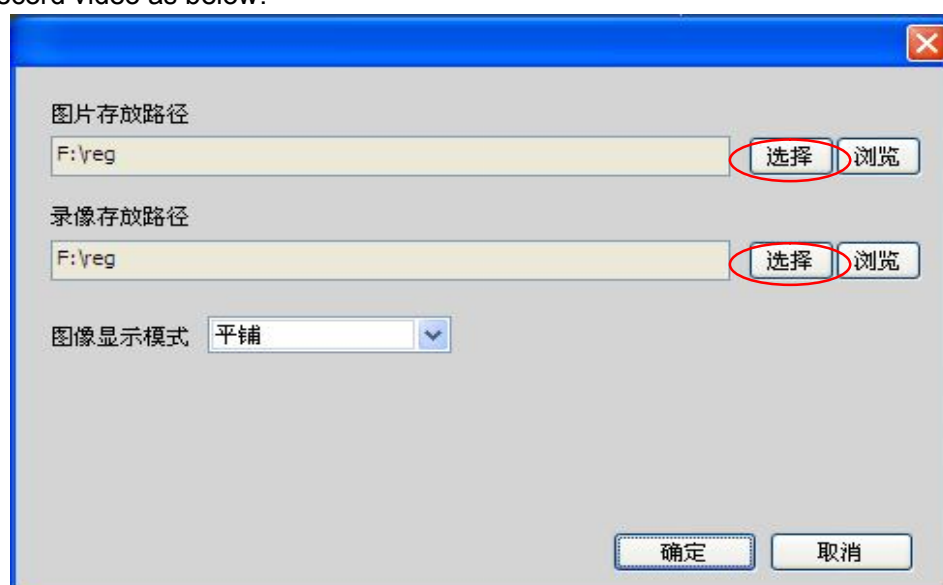
: Open and close IO output of the device.



: Display the added device.

2.2 Menu bar

Click **系统设置** (system configuration), you can select storage path for snapshots and record video as below:




Click  (Screen) to switch between multi screens and full screen.

Click  (View)  : Hide or show the relevant interface.

Click  (Help) to view version information of the client.

2.3 Status bar of video interface




: open voice monitoring.

: Click Both to realize two-way voice intercom between PC client and device.

 Record local video

: Snapshot(Click once to capture one picture).

: Close the current video, the device need to be re-dragged from device list to the displayed screen if you want to watch again.